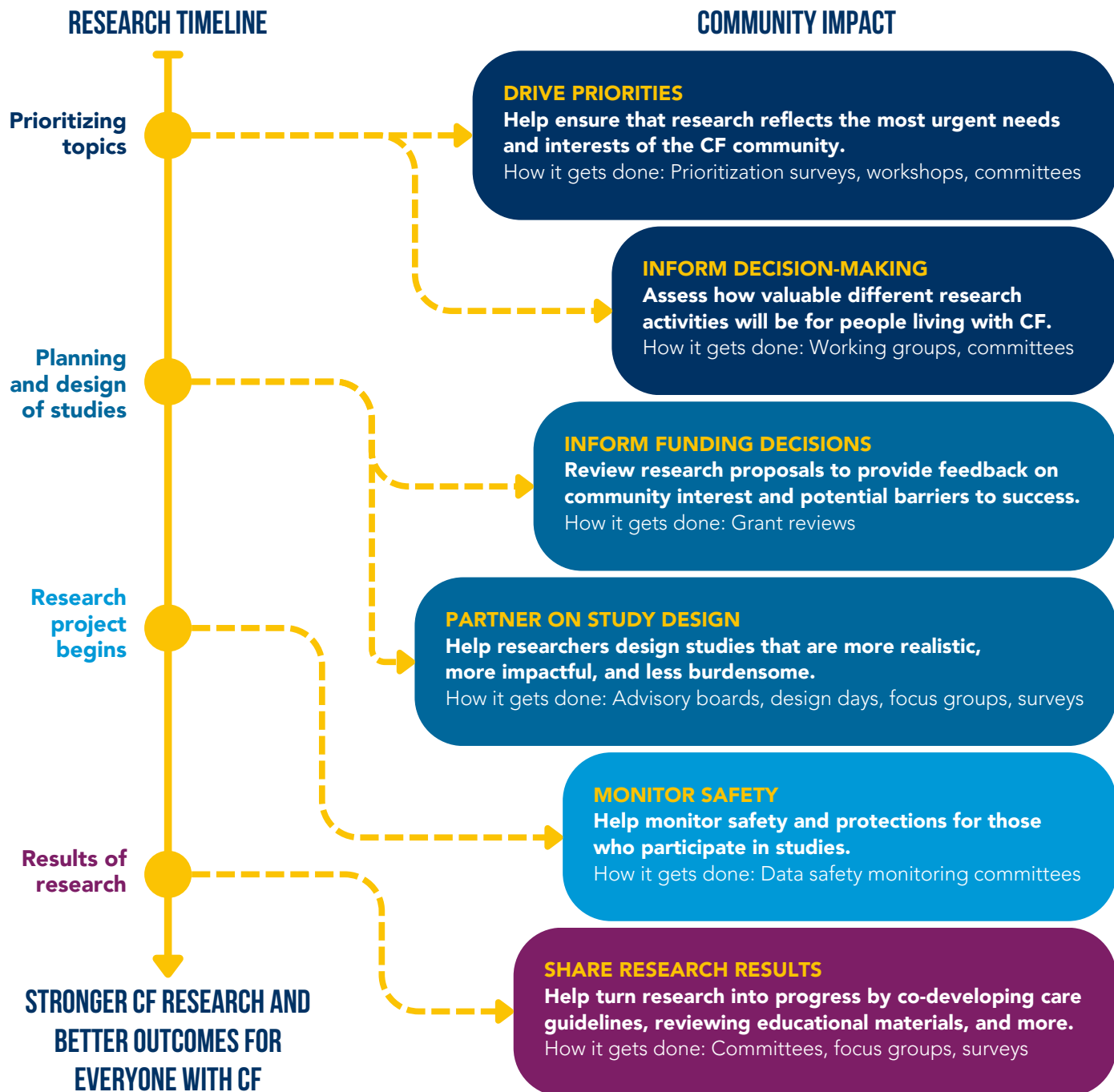


# HOW COMMUNITY INPUT DRIVES CYSTIC FIBROSIS RESEARCH

Representation – hearing from diverse perspectives and communities – is critical to advancing CF research and care. In addition to participating in a clinical study, you can take an active role in shaping CF research by sharing your unique experiences and opinions.



## JOIN COMMUNITY VOICE!

Your voice can make a difference.  
Scan to learn more or get involved!

